

# Magnum Battery!

#loveled



RECHARGEABLE BATTERY FLOODLIGHTS  
COMPATIBLE WITH BOSCH PROFESSIONAL  
18V RECHARGEABLE BATTERY SYSTEM

# Magnum Battery!

#loveled

# 37.5 h

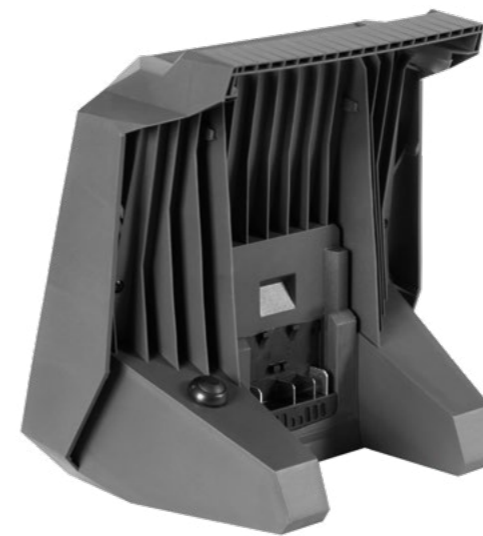
37.5 H CONTINUOUS OPERATION ON BATTERY POWER

Depending on the battery capacity, luminaire model and luminous flux set, the working time of the luminaire without charging is from 1 hour all the way up to 37.5 hours.

The **MAGNUM BATTERY** family of luminaires is professional, mobile and wireless workplace lighting that is 100 % manufactured in the EU. Thanks to many useful functions and numerous accessories, it can be successfully deployed wherever strong lighting and a durable structure with a long service life are required.

For the Bosch company alone, the luminaires can work with around 180 power tools. Rechargeable batteries are available here in versions with a capacity of 2 Ah.

# 180+



# 9250 lm

## MAXIMUM LUMINOUS FLUX

### EFFICIENT AND ENERGY-SAVING LED DIODES

The luminaires have a switch with 4-stage luminous flux control, **which is between 200 lm and 9250 lm** within this family.

**MAGNUM BATTERY** guarantees maximum luminous flux with minimum energy consumption. Thanks to the extraordinary effectiveness of LED diodes, the luminaire achieves up to 20 % better parameters compared to fluorescent luminaires or halogen luminaires. The luminaires are also characterized by a very long service life of up to 50 000 hours.

# 50

## k hours

### LIFETIME OF THE LED DIODES

### HIGHEST QUALITY PANEL

The panel is made of the latest generation of polycarbonate and guarantees a **maximum (80 %) permeability of visible light** and waves close to infrared all the way up to 1100 nm. It is resistant to the effects of a wide temperature range, and its transparency is retained at temperatures from -30 °C to +80 °C.

### BROAD CONFIGURATION POSSIBILITIES

The luminous flux of the luminaire can be easily adjusted and directed precisely onto the illuminated surface. **The arm makes it easy to set up the luminaire at any angle, as it is adjustable to multiple positions. The dedicated Future Stand tripod with a patented and innovative Click Head system** enables the luminaires from the **MAGNUM BATTERY** family to be installed in a flash and without tools.



# Magnum Battery XS

#loveled



5 YEARS  
GUARANTEE

## SELECTED TECHNICAL PARAMETERS

- Lamp power (W): 20
- Maximum luminous flux (lm): 2300
- Color temperature (K): 4000
- Protection rating: III
- Mounting: on surfaces, on a tripod
- Housing: Polypropylene (PP)
- Panel: Polycarbonate (PC)
- Impact resistance class: IK09
- Degree of tightness: IP20
- Power supply: 18V 2Ah 5Ah
- Notification of low battery charge
- Dimensions H/W/D [mm]: 205/212/124
- Switch: 4-stage luminous flux control: 200 lm, 750 lm, 1500 lm, 2300 lm

## LIGHT, HANDY AND COMPACT

The luminaires from the MAGNUM BATTERY family are very light, they only weigh between 0.82 kg and 2.4 kg including the battery, depending on the version. This is undoubtedly a great relief when transporting and handling the luminaire during work or installing it in atypical locations.

## VARIANTS

Art.-No.	Rated power (W)	Color temperature (K)	Luminous flux (lm)	Battery	Weight set (kg)
0509006	20	4000	2200	-	0,47
0509013	20	4000	2300	2Ah	1,26
0509020	20	4000	2300	2Ah	1,66

The luminaire parameters are specified with the tolerance permitted by the standard. The manufacturer reserves the right to change the product parameters in the course of improvement for parameters that are no worse and to make design changes or modernizations. The materials contained in the brochure are not a commercial offer.

# Magnum Battery M

#loveled



5 YEARS  
GUARANTEE

## SELECTED TECHNICAL PARAMETERS

- Lamp power (W): 30
- Maximum luminous flux (lm): 4050
- Color temperature (K): 4000
- Protection rating: III
- Mounting: on surfaces, on a tripod
- Housing: Polypropylene (PP)
- Panel: Polycarbonate (PC)
- Impact resistance class: IK10
- Degree of tightness: IP20
- Power supply: 18V 2Ah 5Ah
- Notification of low battery charge
- Dimensions H/W/D [mm]: 205/400/82
- Switch: 4-stage luminous flux control: 500 lm, 1850 lm, 2750 lm, 4050 lm

## HIGHEST QUALITY PANEL

Thanks to the use of a frost diffuser, the luminaire designers have minimized the glare factor. Luminaires made with LED technology do not heat up, so they can be safely touched and carried even after a good dozen hours of operation, and do not represent a potential source of fire if they come into contact with highly flammable substances.

## VARIANTS

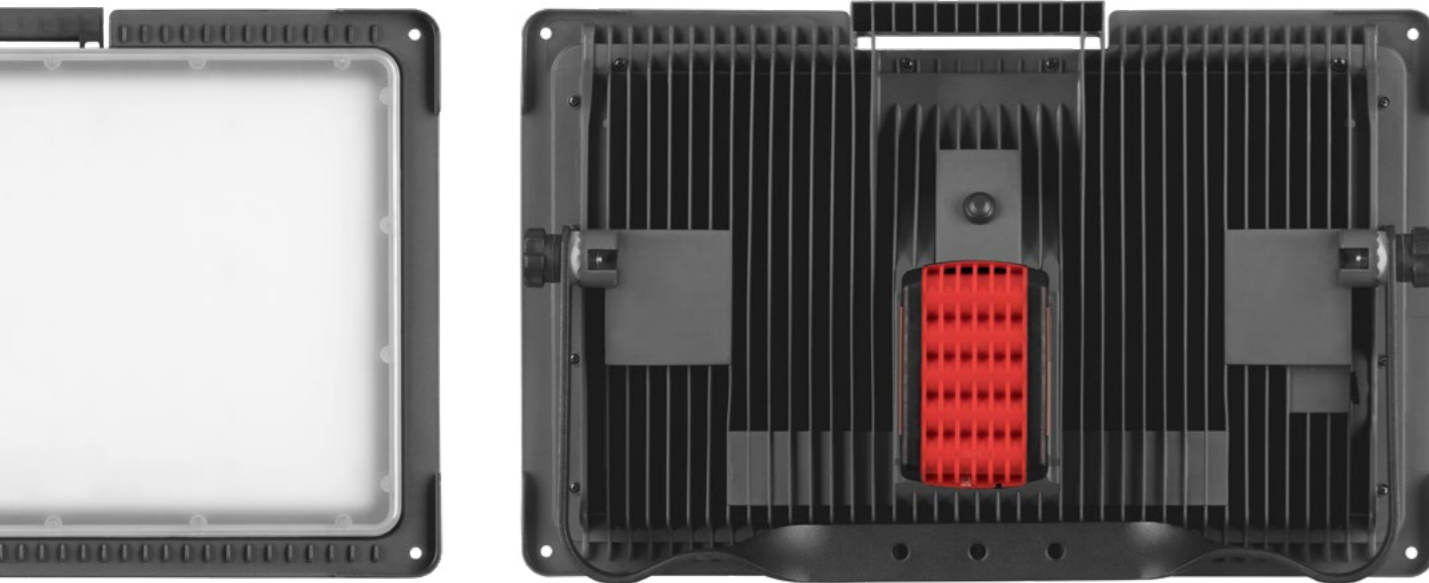
Art.-No.	Rated power (W)	Color temperature (K)	Luminous flux (lm)	Battery	Weight set (kg)
0509228	30	4000	4050	-	1,7
0509235	30	4000	4050	2Ah	2,3

## ACCESSORIES COMPATIBLE WITH THE ENTIRE MAGNUM BATTERY FAMILY

Art.-No.	Name	Capacity	Net weight (kg)
0509150	BOSCH BATTERY 18V	2Ah	0,6
0509174	BOSCH CHARGER EU 18V	-	0,4

# Magnum Battery L

#loveled



5 YEARS  
GUARANTEE

## SELECTED TECHNICAL PARAMETERS

- Lamp power (W): 70
- Maximum luminous flux (lm): 9250
- Color temperature (K): 4000
- Protection rating: III
- Mounting: on surfaces, on a tripod
- Housing: Polypropylene (PP)
- Panel: Polycarbonate (PC)
- Impact resistance class: IK10
- Degree of tightness: IP20
- Power supply: 18V 2Ah 5Ah
- Notification of low battery charge
- Dimensions H/W/D [mm]: 300/478/84
- Switch: 4-stage luminous flux control: 1000 lm, 3800 lm, 5650 lm, 9250 lm

## DURABILITY AND IMPACT RESISTANCE

The housing is made of a durable and elastic material that guarantees a maximum level of impact resistance: IK10\*. This means that the luminaire can also be used under conditions that are prone to mechanical damage (e.g. on construction sites), and falling off the tripod does not pose a risk to the continued functionality of the luminaire.

\* without installed battery

## VARIANTS

Art.-No.	Rated power (W)	Color temperature (K)	Luminous flux (lm)	Battery	Weight set (kg)
0509259	70	4000	9250	-	2,1
0509266	70	4000	9250	2Ah	2,7

## ACCESSORIES COMPATIBLE WITH THE ENTIRE MAGNUM BATTERY FAMILY





**Serwo GmbH**

Benzstraße 4 – 6  
D-51381 Leverkusen

[order@serwo.eu](mailto:order@serwo.eu)  
[www.serwo.eu](http://www.serwo.eu)

**Your contact**

Mr. Jens Schulze  
[jens.schulze@serwo.eu](mailto:jens.schulze@serwo.eu)

powered by

